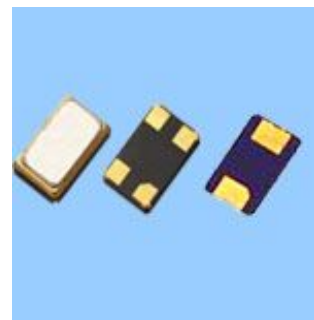


SMD5032

■ Features

A small surface-mount type crystal unit, ideal for OA, AV and Accessories for a car, which need performance for wide temperature range.

- Compact and thin. (5×3.2×1.1mm typ.)
- Excellent electrical performance, ideal for OA and AV applications.
- Excellent environmental performance, including heat and shock resistance.
- Meets the requirements for re-flow profiling using lead-free solder.



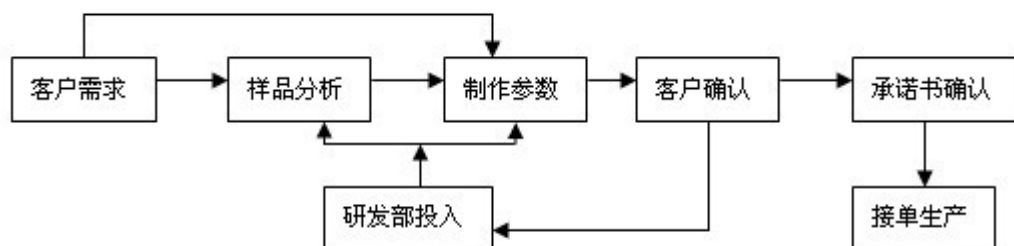
■ Specifications

| 项目 Item | 技术 Specifications |
|----------------------------|---------------------------------|
| 频率范围 Freq. Range | 12.000MHz |
| 调整频差 Freq. Tol. | ±10PPm to ±100PPm |
| 负载电容 Load Capacitance | Suggested by customer |
| Series Resistance | As ESR table |
| Storage Temperature | ±10PPm to ±100PPm |
| 工作温度 Operating Temp | -10°C to 60°C to -40°C to 85°C |
| 储存温度 Storage Temp | -40°C to 85°C to -55°C to 125°C |
| 最大值 Max, drive level | 1000 μW |
| 激励功率, drive level | 100 μW Typical |
| 静电容 Shunt Capacitance | 7pF Max |
| 绝缘电阻 Insulation Resistance | 500mΩ Min at D.C 100v |
| 老化率 Aging | ±5PPm/Year Max |

■ ESR (Series Resistance) 等效阻抗和振荡模式

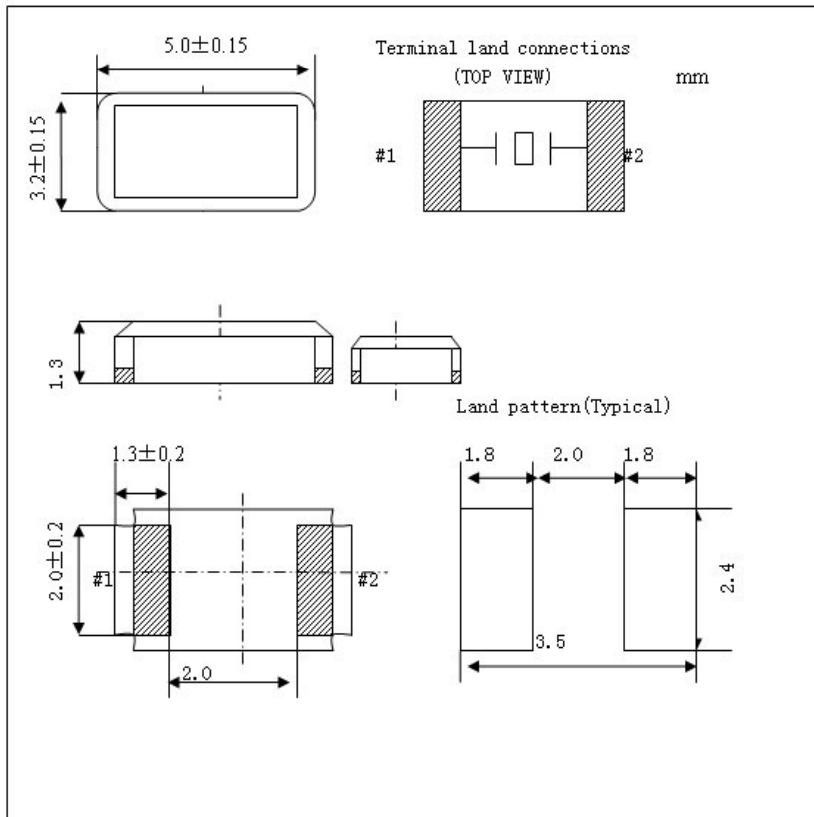
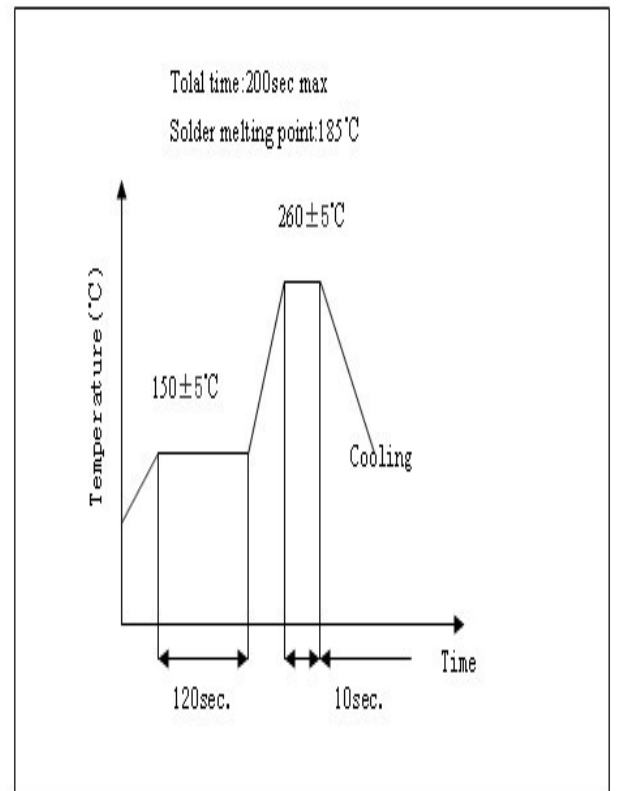
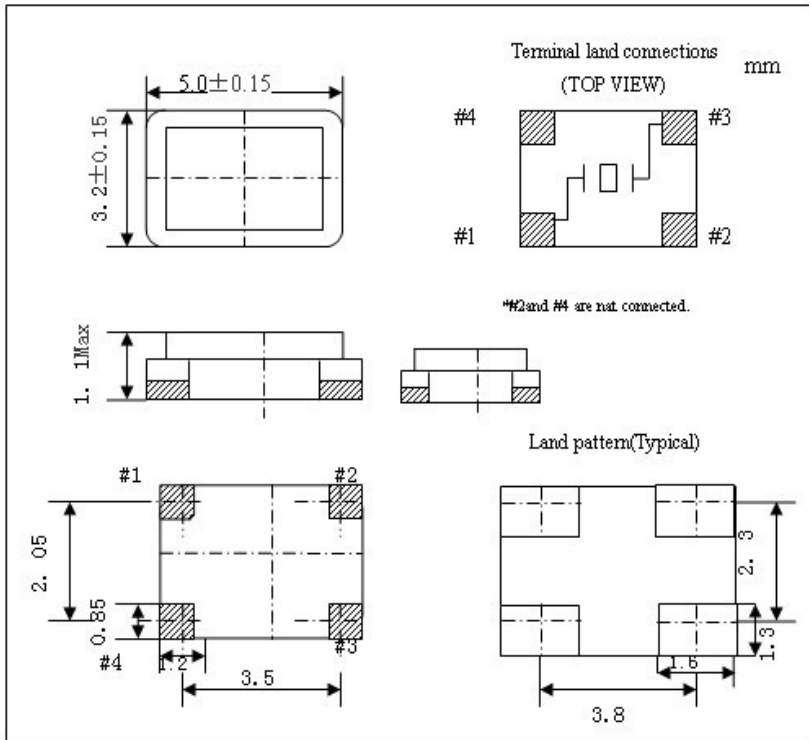
| Frequency (MHz) | Mode | Ohm Max | Frequency (MHz) | Mode | Ohm Max |
|-----------------|-------------|---------|-----------------|----------------|---------|
| 8~10 | Fundamental | 100 | 20~24 | Fundamental | 40 |
| 10~12 | Fundamental | 80 | 24~50 | Fundamental | 30 |
| 12~16 | Fundamental | 60 | 50~150 | Third Overtone | 80 |
| 16~20 | Fundamental | 50 | | | |

■ Ordering Information

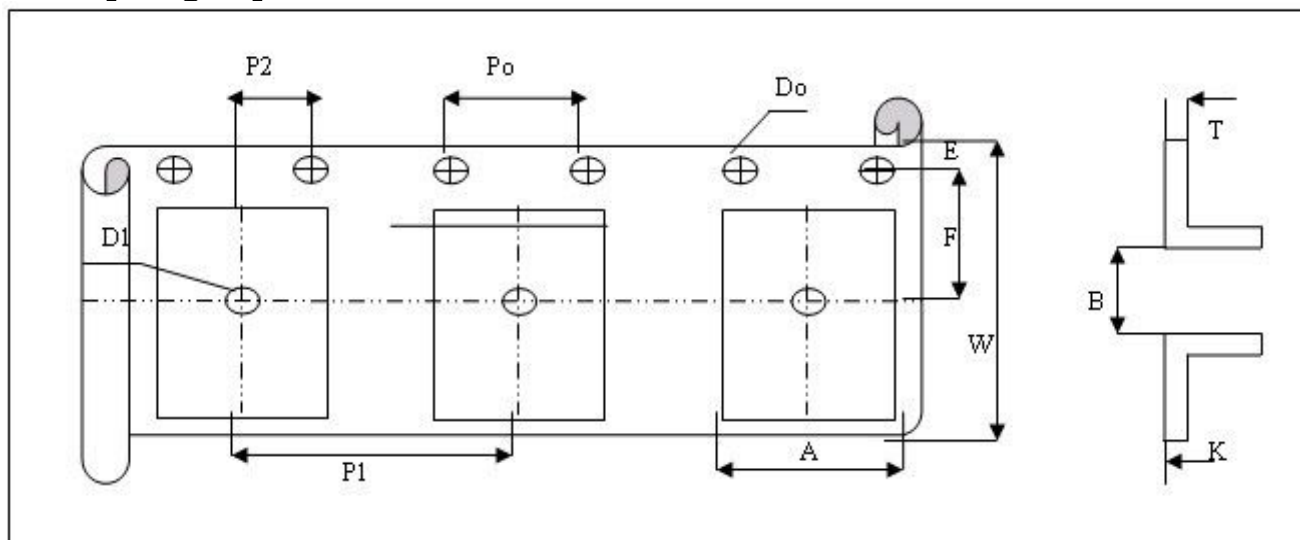


■ Dimensions

■ Reflow Condition

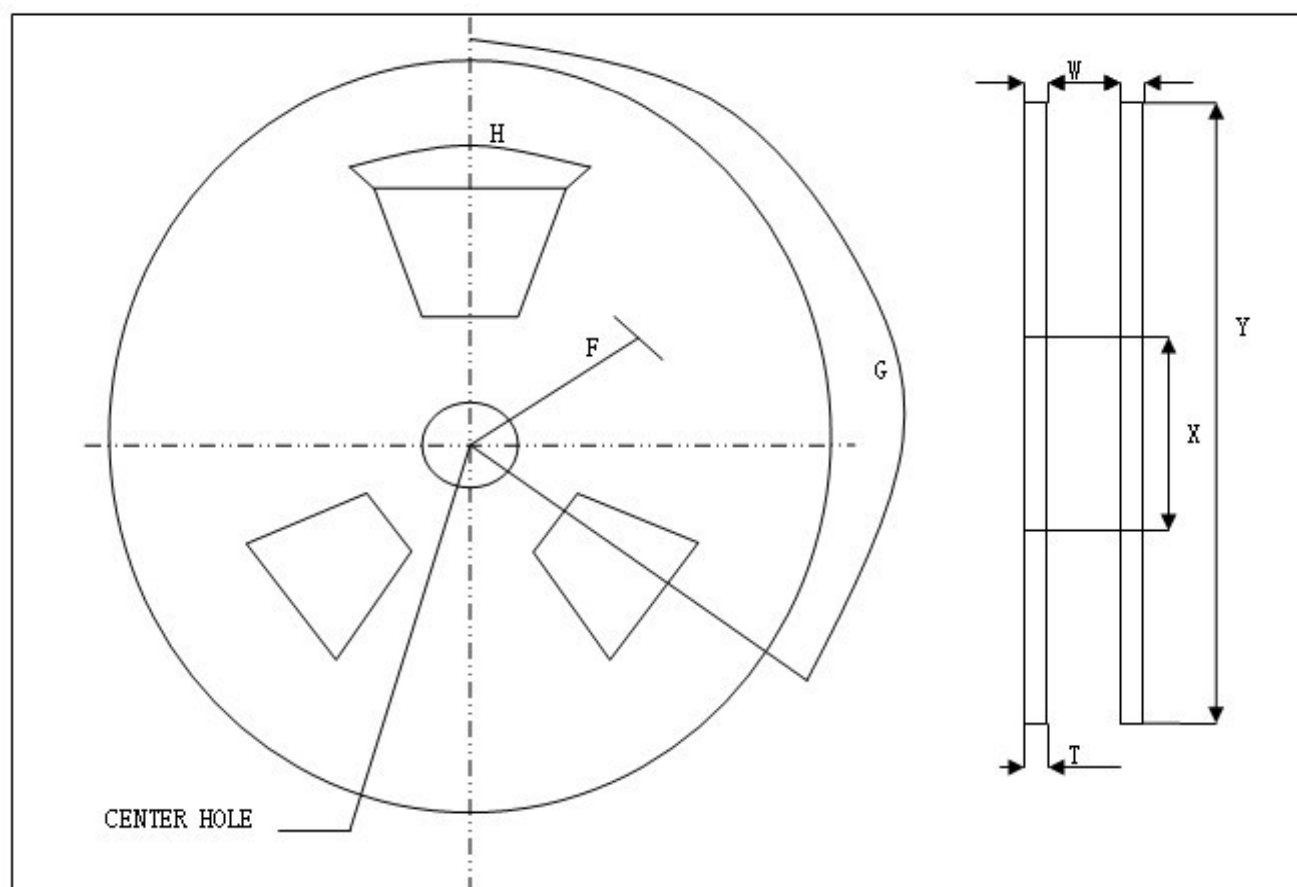


■ Taping Specification



| | | | | | | |
|-----------|---------|-----|-----|-----|------|-----|
| Symbol | A | B | Do | D1 | E | F |
| DIMENSION | 5*3.24P | 3.5 | 1.5 | 1.5 | 1.75 | 5.5 |
| Symbol | K | Po | P1 | P2 | T | W |
| DIMENSION | 5*3.24p | 1.1 | 4 | 8 | 2 | 12 |

Unit:mm



| | | | | | | | |
|-----------|---------|-----|--------|-----|------|----|-----|
| Symbol | H | F | G | W | T | X | Y |
| Dimension | 5*3.24P | 40° | 21±0.8 | 120 | 17.5 | 50 | 250 |